

# Section Seven

## Hardware

### Contents

Mounting Screw, Phillips Pan Head .....	135
Round Head Machine Screw, Slotted .....	135
Hex Head Cap Screw .....	136
Hex Head Lag Screw .....	137
Carriage Bolt .....	137
Toggle Bolt .....	138
J-Bolt .....	138
V-Bolt .....	139
J-Bolt and V-Bolt Plate .....	139
External Tooth Lock Washer .....	140
Internal Tooth Lock Washer .....	140
Lock Washer .....	141
Flat Washer .....	141
Heavy Hex Nut .....	142
Machine Screw Expansion Shield .....	142
Lag Expansion Shield .....	143
Drop-in Anchor .....	143
Threaded Rod .....	144
Threaded Rod (Stainless Steel) .....	144
Auxiliary Framing Clip .....	145
Double Auxiliary Framing Clip .....	145
Hex Nut (Stainless Steel) .....	146
Hex Head Cap Screw (Stainless Steel) .....	146
Lock Washer (Stainless Steel) .....	147
Flat Washer (Stainless Steel) .....	147
Threaded Rod Sleeve (Split) .....	148
Threaded Rod End Cap .....	148
Threaded Rod Coupling .....	149
Touch-Up Splash Paint .....	149
Touch-Up Paint - Aerosol .....	150
Touch-Up Splash Paint - Pint .....	150
Strut Channel (Slotted) .....	151
Strut Channel (Solid) .....	151

**Hardware**

**Contents**

**Spring Nut ..... 152**  
**Strut Nut ..... 152**  
**Ground Bar Kit Insulated 4" x 10" ..... 153**  
**Ground Bar Kit Insulated 4" x 20" ..... 153**  
**Ground Bar Kit Insulated 1" x 12" ..... 154**  
**Insulator Red Polyester ..... 154**

## Mounting Screw, Phillips Pan Head

**Material**

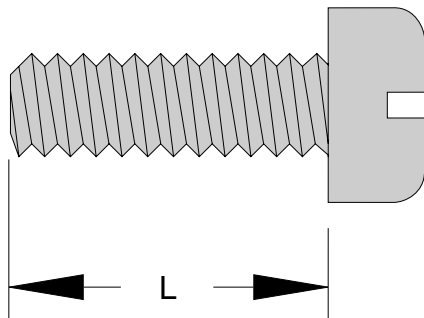
- Grade 2 Steel

**Finish**

- Stainless

**Notes**

- Other Lengths Available



Part Number	Thread	L	Weight(lbs.)
MS103212	10-24	1/2"	.74 per 100
MS122438	12-24	3/8"	.74 per 100
MS122414	12-24	1/4"	.74 per 100
MS122412	12-24	1/2"	.74 per 100
MS122458	12-24	5/8"	.92 per 100
MS122434	12-24	3/4"	.92 per 100
MS12241	12-24	1"	1.10 per 100
MS1224112	12-24	1-1/2"	1.60 per 100
MS12242	12-24	2"	2.10 per 100

## Round Head Machine Screw, Slotted

**Material**

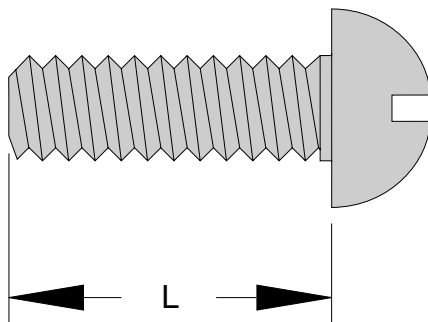
- Grade 2 Steel

**Finish**

- Zinc and yellow

**Notes**

- Other Lengths Available



Part Number	Thread	L	Weight(lbs.)
RHMS832316	8-32	3/16"	.74 per 100
RHMS103212	10-32	1/2"	.74 per 100
RHMS103234	10-32	3/4"	.74 per 100
RHMS122412	12-24	1/2"	.74 per 100
RHMS12241	12-24	1"	1.10 per 100
RHMS1438	1/4"-20	3/8"	.98 per 100
RHMS1412	1/4"-20	1/2"	1.17 per 100
RHMS1458	1/4"-20	5/8"	1.17 per 100
RHMS1434	1/4"-20	3/4"	1.36 per 100
RHMS141	1/4"-20	1"	1.36 per 100

## Hex Head Cap Screw

### Material

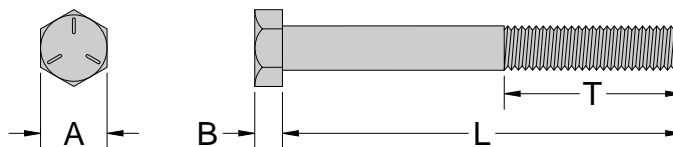
- Grade 5 Steel

### Finish

- Zinc and yellow

### Notes

- Other Sizes Available Upon Request



Bolt Size	A	B
1/4" - 20	7/16"	5/32"
3/8" - 16	9/16"	9/64"
1/2" - 13	3/4"	5/16"
5/8" - 11	15/16"	15/32"

### 3/8"-16 Thread Size

Part Number	L	T	Weight(lbs.)
HHCS3812	1/2"	1/2"	2.93 per 100
HHCS3834	3/4"	3/4"	3.55 per 100
HHCS381	1"	1"	4.17 per 100
HHCS38114	1-1/4"	1"	4.86 per 100
HHCS38112	1-1/2"	1"	5.64 per 100
HHCS38134	1-3/4"	1"	6.42 per 100
HHCS382	2"	1"	7.19 per 100
HHCS38212	2-1/2"	1"	8.74 per 100
HHCS383	3"	1"	10.39 per 100

### 1/4"-20 Thread Size

Part Number	L	T	Weight(lbs.)
HHCS1412	1/2"	1/2"	1.18 per 100
HHCS1434	3/4"	3/4"	1.44 per 100
HHCS141	1"	3/4"	1.47 per 100
HHCS14114	1-1/4"	3/4"	2.08 per 100
HHCS14112	1-1/2"	3/4"	2.43 per 100
HHCS14134	1-3/4"	3/4"	2.77 per 100
HHCS142	2"	3/4"	3.12 per 100
HHCS14234	2-3/4"	3/4"	3.81 per 100
HHCS143	3"	3/4"	4.50 per 100

### 1/2"-13 Thread Size

Part Number	L	T	Weight(lbs.)
HHCS1234	3/4"	3/4"	8.10 per 100
HHCS121	1"	1"	9.99 per 100
HHCS12114	1-1/4"	1-1/4"	10.30 per 100
HHCS12112	1-1/2"	1-1/4"	11.59 per 100
HHCS122	2"	1-1/4"	14.35 per 100
HHCS12212	2-1/2"	1-1/4"	17.11 per 100
HHCS12234	2-3/4"	1-1/4"	18.34 per 100
HHCS123	3"	1-1/4"	19.87 per 100
HHCS12314	3-1/4"	1-1/4"	21.25 per 100
HHCS12312	3-1/2"	1-1/4"	22.63 per 100
HHCS12334	3-3/4"	1-1/4"	24.01 per 100
HHCS124	4"	1-1/4"	25.39 per 100
HHCS12412	4-1/2"	1-1/4"	28.15 per 100
HHCS125	5"	1-1/4"	30.91 per 100

### 5/8"-11 Thread Size

Part Number	L	T	Weight(lbs.)
HHCS5834	3/4"	3/4"	13.39 per 100
HHCS581	1"	1"	15.16 per 100
HHCS58114	1-1/4"	1-1/4"	16.93 per 100
HHCS58112	1-1/2"	1-1/2"	18.70 per 100
HHCS58134	1-3/4"	1-1/2"	20.66 per 100
HHCS582	2"	1-1/2"	22.82 per 100
HHCS58212	2-1/2"	1-1/2"	27.14 per 100
HHCS583	3"	1-1/2"	31.44 per 100
HHCS58314	3-1/4"	1-1/2"	33.59 per 100
HHCS58312	3-1/2"	1-1/2"	35.75 per 100
HHCS58334	3-3/4"	1-1/2"	37.90 per 100
HHCS584	4"	1-1/2"	40.06 per 100
HHCS58412	4-1/2"	1-1/2"	44.37 per 100
HHCS585	5"	1-1/2"	48.68 per 100

## Hex Head Lag Screw

### Material

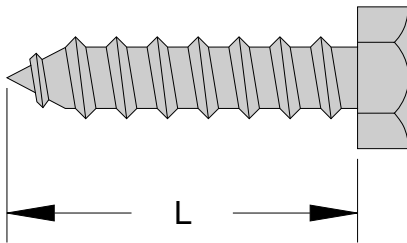
- Grade 2 Steel

### Finish

- Zinc and yellow

### Notes

- Other Sizes Available Upon Request



Part Number	Thread	T	Weight(lbs.)
LS38114	3/8"-16	1-1/4"	4.31 per 100
LS38112	3/8"-16	1-1/2"	4.74 per 100
LS38134	3/8"-16	1-3/4"	5.24 per 100
LS382	3/8"-16	2"	6.01 per 100
LS38212	3/8"-16	2-1/2"	7.03 per 100
LS383	3/8"-16	3"	7.50 per 100
LS386	3/8"-16	6"	14.00 per 100
LS12212	1/2"-13	2-1/2"	12.74 per 100

Hardware

## Carriage Bolt

### Material

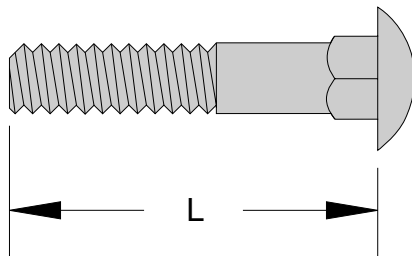
- Grade 5 Steel

### Finish

- Zinc and yellow

### Notes

- Other Sizes Available Upon Request



Part Number	Thread	L	Weight(lbs.)
CB141	1/4"-20	1"	1.62 per 100
CB14114	1/4"-20	1-1/4"	2.09 per 100
CB14138	1/4"-20	1-3/8"	2.15 per 100
CB14112	1/4"-20	1-1/2"	2.29 per 100
CB38112	3/8"-16	1-1/2"	5.26 per 100
CB382	3/8"-16	2"	7.14 per 100
CB38214	3/8"-16	2-1/4"	7.43 per 100
CB38212	3/8"-16	2-1/2"	8.16 per 100
CB38234	3/8"-16	2-3/4"	8.66 per 100
CB383	3/8"-16	3"	10.42 per 100
CB38318	3/8"-16	3-1/8"	10.66 per 100
CB123	1/2"-13	3"	18.60 per 100
CB583	5/8"-16	3"	18.92 per 100

## Toggle Bolt

**Material**

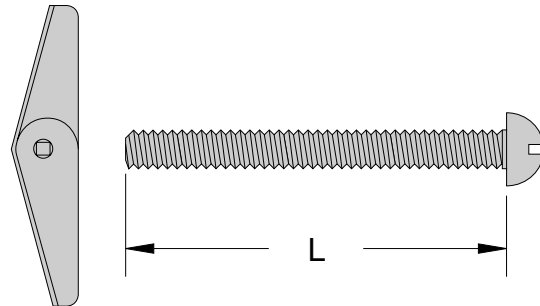
- Grade 2

**Finish**

- Zinc

**Notes**

- Other Sizes Available Upon Request



Part Number	Thread	T	Weight(lbs.)
TB10243	10-16	3"	3.50 per 100
TB383	3/8"-16	3"	16.0 per 100
TB384	3/8"-16	4"	18.0 per 100

Hardware

## J-Bolt

**Material**

- B-7 Steel

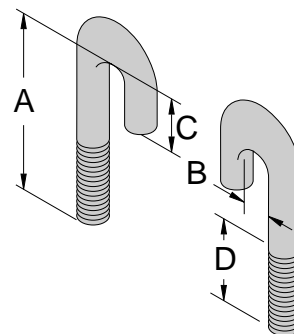
**Finish**

- Zinc and yellow

**Notes**

- Other Sizes Available Upon Request

Part Number	Thread	A	B	C	D	Weight(lbs.)
JB14134A	1/4"-20	1-3/4"	1/4"	1/2"	3/4"	2.5 per 100
JB14214A	1/4"-20	2-1/4"	7/16"	3/4"	1"	3.5 per 100
JB14234A	1/4"-20	2-3/4"	7/16"	3/4"	1-1/2"	4 per 100
JB14314A	1/4"-20	3-1/4"	7/16"	3/4"	1-1/2"	4.5 per 100
JB516214A	5/16"-18	2-1/4"	7/16"	3/4"	1"	6 per 100
JB516234A	5/16"-18	2-3/4"	7/16"	3/4"	1"	6.5 per 100
JB516314A	5/16"-18	3-1/4"	5/16"	3/4"	3/4"	8 per 100
JB516334A	5/16"-18	3-3/4"	5/16"	3/4"	1-3/4"	8.5 per 100
JB516334B	5/16"-18	3-3/4"	7/16"	3/4"	1-1/2"	20.5 per 100
JB38214A	3/8"-16	2-1/4"	7/16"	3/4"	1"	9 per 100
JB38234A	3/8"-16	2-3/4"	7/16"	3/4"	1"	10.5 per 100
JB38334A	3/8"-16	3-3/4"	7/16"	3/4"	1"	10.5 per 100
JB38414A	3/8"-16	4-1/4"	1/2"	3/4"	1-1/2"	15.5 per 100
JB38678A	3/8"-16	6-7/8"	7/16"	3/4"	1-3/4"	20.5 per 100
JB382A	3/8"-16	2"	7/16"	3/4"	1"	8.5 per 100



## V-Bolt

### Material

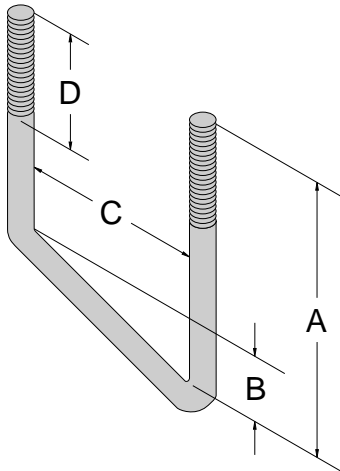
- B-7 Steel

### Finish

- Zinc and yellow

### Notes

- For J-Bolt and V-Bolt Plate
- Other Sizes Available Upon Request



Part Number	Thread	A	B	C	D	Weight(lbs.)
VB383A	3/8"-16	3"	2"	2-1/8"	1"	.12
VB384A	3/8"-16	4"	2"	2-1/8"	1-1/4"	.15
VB386A	3/8"-16	6"	2"	2-1/8"	2"	.34
VB123A	1/2"-13	3"	2"	2-1/8"	1"	.55
VB125A	1/2"-13	5"	2"	2-1/8"	2"	.50
VB126A	1/2"-13	6"	2"	2-1/8"	2"	.60
VB128A	1/2"-13	8"	2"	2-1/8"	2"	.81
VB5813A	5/8"-11	13"	2"	2-1/16"	10-3/4"	1.92

## J-Bolt and V-Bolt Plate

### Material

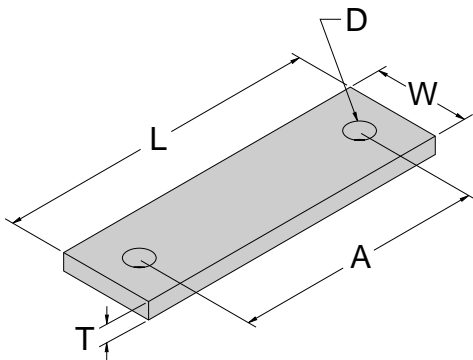
- 1/4" Steel

### Finish

- Zinc and yellow

### Notes

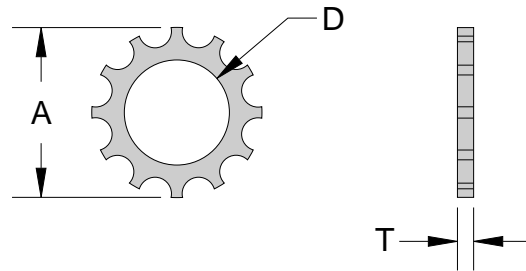
- Other Sizes Available Upon Request



Part Number	L	W	A	T	D	Weight(lbs.)
JBP31214-1	3.500	1.000	2.313	.250	.313	0.1
VBP438-1	4.000	1.500	2.438	.250	.438	0.1

## External Tooth Lock Washer

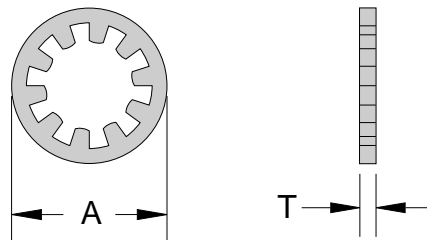
Material	Finish	Notes
• Steel	• Zinc and yellow	



Part Number	Bolt Size	A	D	T	Weight(lbs.)
ETLW14	1/4"	.485"	.262"	.045"	.45 per 100
ETLW38	3/8"	.675"	.390"	.065"	.72 per 100
ETLW12	1/2"	.992"	.515"	.095"	2.06 per 100
ETLW58	5/8"	1.055"	.650"	.110"	3.7 per 100

## Internal Tooth Lock Washer

Material	Finish	Notes
• Steel	• Zinc and yellow	



Part Number	Bolt Size	A	T	Weight(lbs.)
ITLW14	1/4"	.470"	.050"	.45 per 100
ITLW38	3/8"	.515"	.065"	.72 per 100
ITLW12	1/2"	.650"	.095"	2.06 per 100
ITLW58	5/8"	.740"	.110"	3.7 per 100

## Lock Washer

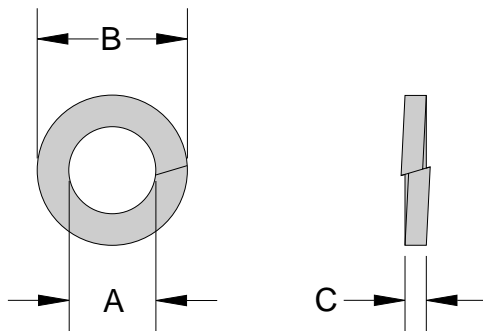
**Material**

- Grade 8 Steel

**Finish**

- Zinc and yellow

**Notes**



Part Number	Size	A	B	C	Weight(lbs.)
LW08	#8	.167"	.289"	.04"	0.22 per 100
LW10	#10	.195"	.325"	.05"	0.60 per 100
LW1224	#12	.220"	.369"	.06"	0.22 per 100
LW14	1/4"	.255"	.469"	.05"	0.22 per 100
LW516	5/16"	.317"	.576"	.09"	2.40 per 100
LW38	3/8"	.382"	.688"	.10"	0.60 per 100
LW12	1/2"	.509"	.875"	.13"	1.28 per 100
LW58	5/8"	.636"	1.094"	.17"	2.40 per 100

## Flat Washer

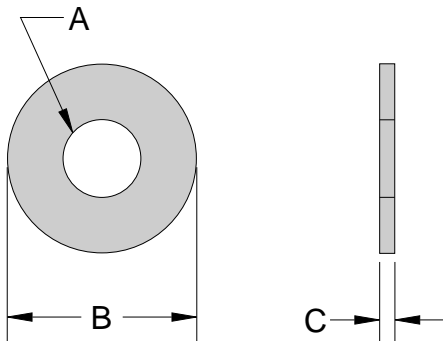
**Material**

- Grade 8 Steel

**Finish**

- Zinc and yellow

**Notes**



Part Number	Size	A	B	C	Weight(lbs.)
FW10	#10	.250"	.565"	.05"	0.45 per 100
FW1224	#12	.284"	.626"	.07"	0.72 per 100
FW14	1/4"	.308"	.750"	.06"	2.06 per 100
FW516	5/16"	.383"	.886"	.08"	0.72 per 100
FW38	3/8"	.440"	1.000"	.07"	0.72 per 100
FNDW38	3/8"	.405"	1.500"	.05"	0.72 per 100
FW12	1/2"	.537"	1.375"	.10"	2.06 per 100
FW58	5/8"	.705"	1.750"	.12"	3.70 per 100
FW34	3/4"	.825"	2.100"	.14"	3.70 per 100

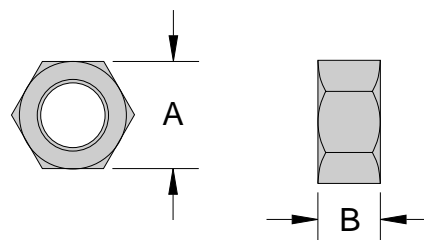
## Heavy Hex Nut

**Material**

- Grade 2H

**Finish**

- Zinc and yellow

**Notes**

Part Number	Size	A	B	Weight(lbs.)
HN1032	10-32	.366"	.12"	0.74 per 100
HN1224	12-24	.426"	.153"	1.60 per 100
HN14	1/4"-10	.437"	.219"	0.74 per 100
HN516	5/16"-11	.555"	.29"	7.33 per 100
HN38	3/8"-16	.562"	.328"	1.60 per 100
HN12	1/2"-13	.750"	.437"	3.75 per 100
HN58	5/8"-11	.937"	.547"	7.33 per 100

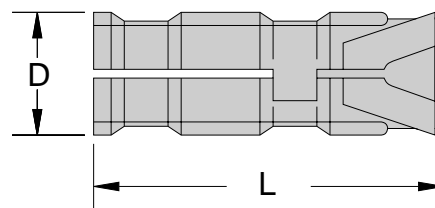
## Machine Screw Expansion Shield

**Material**

- Zinc Alloy

**Finish**

- Zinc

**Notes**

Part Number	Thread	L	D	Weight(lbs.)
MSES14	3/8"-16	1-3/8"	1/2"	5.2 per 100
MSES12	1/2"-13	2"	5/8"	13.2 per 100
MSES58	5/8"-11	2-3/4"	1"	24.0 per 100

## Lag Expansion Shield

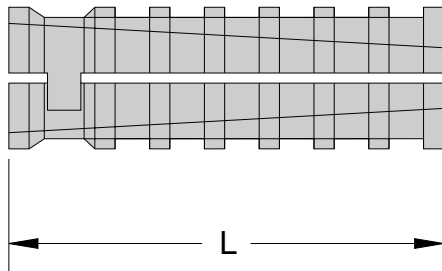
**Material**

- Zamac 7 Alloy

**Finish**

- Zinc

**Notes**



Part Number	Thread	L	Hole	Weight(lbs.)
LES38	3/8"-16	2-1/2"	5/8"	9.5 per 100
LES12	1/2"-13	3"	3/4"	14.3 per 100

Hardware

## Drop-in Anchor

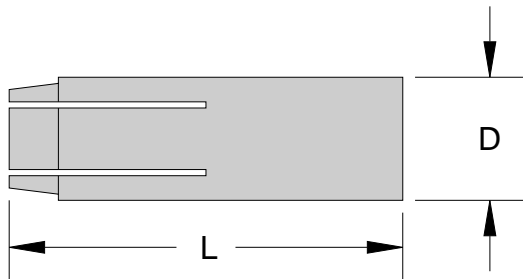
**Material**

- ASTM B-633

**Finish**

- Zinc

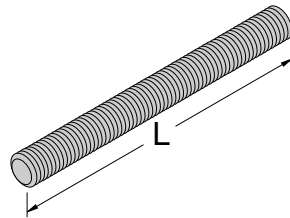
**Notes**



Part Number	Size	L	D	Weight(lbs.)
DA38	3/8"	1-9/16"	19/32"	6.45 per 100
DA12	1/2"	2"	5/8"	11.3 per 100
DA58	5/8"	2-9/16"	27/32"	30.0 per 100

## Threaded Rod

<b>Material</b>	<b>Finish</b>	<b>Notes</b>
<ul style="list-style-type: none"> <li>B7 Steel</li> </ul>	<ul style="list-style-type: none"> <li>Zinc and yellow</li> </ul>	<ul style="list-style-type: none"> <li>Other Sizes Available Upon Request.</li> </ul>



### 5/8"-11 Thread Size

Part Number	L	Weight(lbs.)
TR586	6"	0.4
TR5812	12"	0.7
TR5824	24"	1.3
TR5836	36"	2.7
TR5872	72"	5.3
TR58144	144"	10.7

### 1/2"-13 Thread Size

Part Number	L	Weight(lbs.)
TR126	6"	0.3
TR1212	12"	0.6
TR1224	24"	1.0
TR1236	36"	1.6
TR1272	72"	3.2
TR12144	144"	6.4

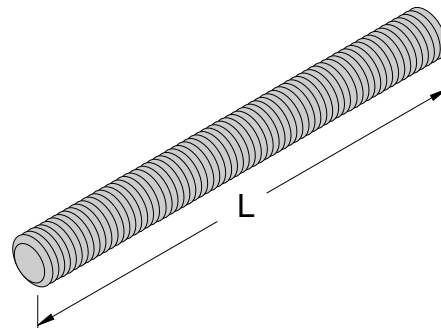
### 3/8"-16 Thread Size

Part Number	L	Weight(lbs.)
TR386	6"	0.1
TR3812	12"	0.3
TR3824	24"	1.7
TR3830	30"	2.5
TR3872	72"	4.2
TR38144	144"	5.7

Hardware

## Threaded Rod (Stainless Steel)

<b>Material</b>	<b>Finish</b>	<b>Notes</b>
<ul style="list-style-type: none"> <li>Stainless Steel</li> </ul>	<ul style="list-style-type: none"> <li>Stainless</li> </ul>	<ul style="list-style-type: none"> <li>Other Sizes Available Upon Request.</li> </ul>



### 1/2"-13 Thread Size

Part Number	L	Weight(lbs.)
TR1236SS	36"	1.6
TR1272SS	72"	3.2

## Auxiliary Framing Clip

**Material**

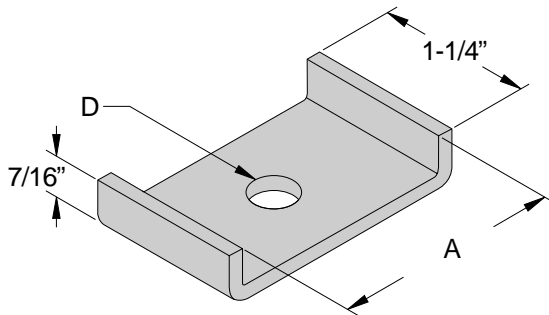
- B7 Steel

**Finish**

- Zinc and yellow

**Notes**

- Other Sizes Available Upon Request.



### Auxiliary Channel

Part Number	A	D	Weight(lbs.)
AUXFC516	1-7/8"	3/8"	0.1
AUXFC38	1-7/8"	7/16"	0.1
AUXFC12	1-7/8"	9/16"	0.1
AUXFC58	1-7/8"	11/16"	0.1
AUXFC21	2-3/4"	9/16"	0.1

### Auxiliary Bar

Part Number	A	D	Weight(lbs.)
AUXFC38BR	1-1/2"	7/16"	0.1
AUXFC12BR	1-1/2"	9/16"	0.1
AUXFC58BR	1-1/2"	11/16"	0.1

### Insulator

Part Number	A	D	Weight(lbs.)
AUXFC12INS	2-11/16"	9/16"	0.1

## Double Auxiliary Framing Clip

**Material**

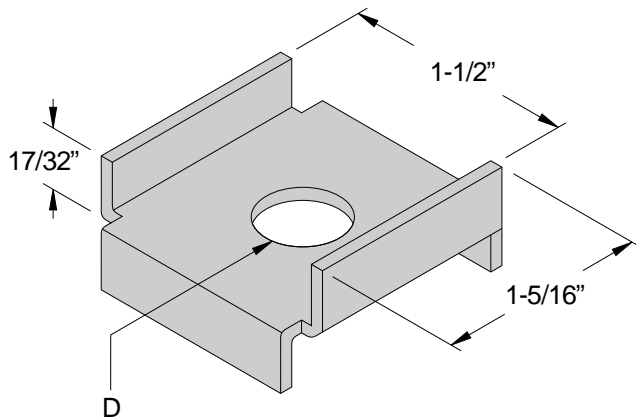
- Stainless Steel

**Finish**

- Stainless

**Notes**

- Other Sizes Available Upon Request.



### Auxiliary Channel

Part Number	D	Weight(lbs.)
AUXDFC38	7/16"	0.2
AUXDFC12	9/16"	0.2
AUXDFC58	11/16"	0.2

### Auxiliary Bar

Part Number	D	Weight(lbs.)
AUXDFC38BR	7/16"	0.2
AUXDFC12BR	9/16"	0.2
AUXDFC58BR	11/16"	0.2

## Hex Nut (Stainless Steel)

**Material**

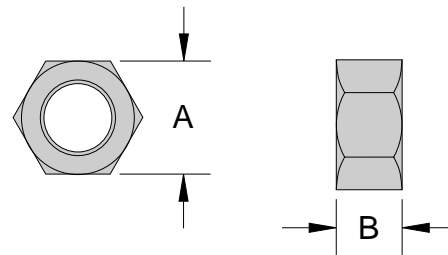
- Stainless Steel

**Finish**

- Stainless

**Notes**

- Other Sizes Available Upon Request



Part Number	Size	A	B	Weight(lbs.)
HN14SS	1/4"-20	.417"	.256"	0.9 per 100
HN516SS	5/16"-18	.495"	.265"	1.3 per 100
HN38SS	3/8"-16	.553"	.326"	1.6 per 100
HN12SS	1/2"-13	.741"	.431"	3.6 per 100

## Hex Head Cap Screw (Stainless Steel)

**Material**

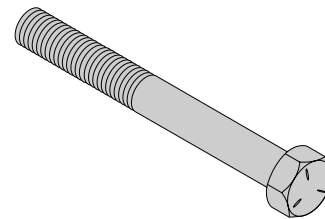
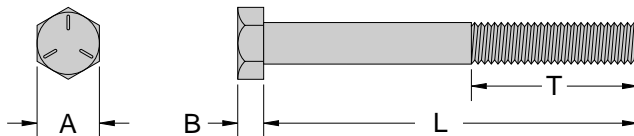
- Stainless Steel

**Finish**

- Stainless

**Notes**

- Other Sizes Available Upon Request



Part Number	Thread	A	B	L	T	Weight(lbs.)
HHCS381SS	3/8"-16	17/32"	15/64"	1"	1"	4.0 per 100
HHCS382SS	3/8"-16	17/32"	15/64"	2"	1"	5.3 per 100
HHCS38212SS	3/8"-16	17/32"	15/64"	2-1/2"	1"	5.9 per 100
HHCS121SS	1/2"-13	47/64"	5/16"	1"	1"	8.4 per 100

## Lock Washer (Stainless Steel)

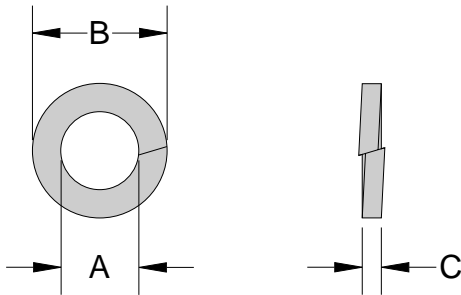
**Material**

- Stainless Steel

**Finish**

- Stainless

**Notes**



Part Number	Size	A	B	C	Weight(lbs.)
LW14SS	1/4"	.255"	.469"	.04"	0.2 per 100
LW516SS	5/16"	.315"	.571"	.09"	0.3 per 100
LW38SS	3/8"	.380"	.674"	.10"	0.6 per 100
LW12SS	1/2"	.502"	.855"	.14"	1.4 per 100

## Flat Washer (Stainless Steel)

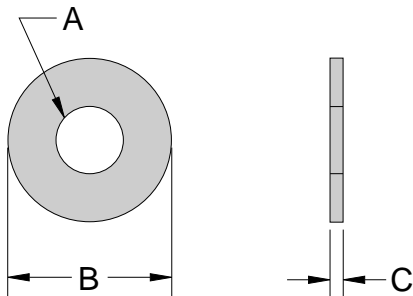
**Material**

- Stainless Steel

**Finish**

- Stainless

**Notes**

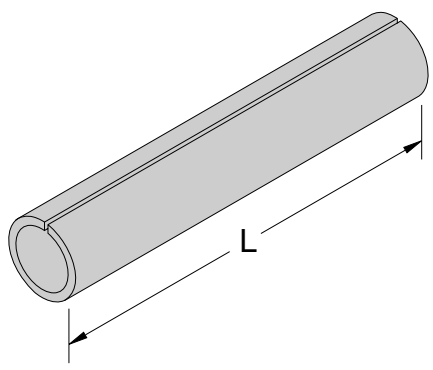


Part Number	Size	A	B	C	Weight(lbs.)
FW14SS	1/4"	5/16"	.595"	.04"	0.6 per 100
FW516SS	5/16"	11/32"	.740"	.04"	0.8 per 100
FW38SS	3/8"	7/16"	.879"	.05"	1.0 per 100
FW12SS	1/2"	9/16"	1.25"	.06"	1.4 per 100

Hardware

## Threaded Rod Sleeve (Split)

Material	Finish	Notes
<ul style="list-style-type: none"> <li>Rigid PVC</li> <li>UL-94 VO Flame Resistant</li> </ul>	<ul style="list-style-type: none"> <li>Gray</li> </ul>	

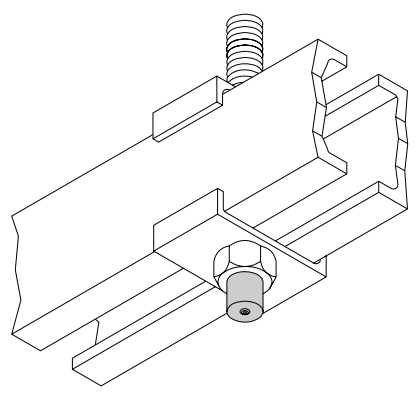


Part Number	T. Rod	L	Weight(lbs.)
TRS58	5/8"-11	72"	0.3

Hardware

## Threaded Rod End Cap

Material	Finish	Notes
<ul style="list-style-type: none"> <li>Polyethylene</li> </ul>	<ul style="list-style-type: none"> <li>Black</li> </ul>	



Part Number	T. Rod	Weight(lbs.)
TREC12	1/2"-13	0.1 per 100
TREC58	5/8"-11	0.1 per 100

## Threaded Rod Coupling

**Material**

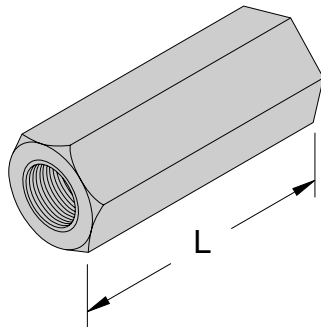
- Grade 2H

**Finish**

- Zinc and Yellow

**Notes**

- Other Sizes Available



Part Number	T. Rod	L	Weight(lbs.)
TRC12	1/2"-13	1-3/4"	12.2 per 100
TRC58	5/8"-11	2-1/8"	18.0 per 100

Hardware

## Touch-Up Splash Paint

**Material**

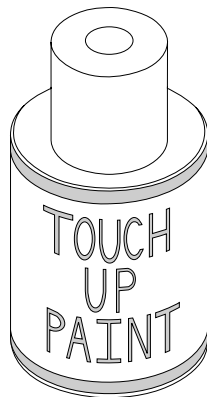
- Lacquer - Semi Gloss

**Finish**

- GR = Telco Gray
- GY = Gray

**Notes**

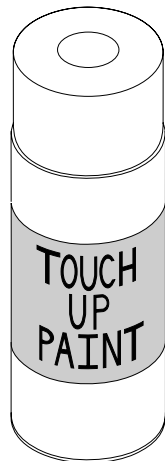
- 0.6 Ounces
- Cap With Brush



Part Number	Weight(lbs.)	Finish
TUPGR1-006	.06	Telco Gray
TUPGR2-006	.06	Gray

## Touch-Up Paint - Aerosol

Material	Finish	Notes
<ul style="list-style-type: none"> <li>Lacquer - Semi Gloss</li> </ul>	GR = Telco Gray BK = Black OR = Orange BL = Blue	<ul style="list-style-type: none"> <li>Aerosol - 12 Ounces</li> </ul>



Part Number	Weight(lbs.)
TUPXX	1.0

## Touch-Up Splash Paint - Pint

Material	Finish	Notes
<ul style="list-style-type: none"> <li>Lacquer - Semi Gloss</li> </ul>	GR = Telco Gray BK = Black OR = Orange BL = Blue	<ul style="list-style-type: none"> <li>Pint - 16 Ounces</li> </ul>



Part Number	Weight(lbs.)
TUPXX-16	1.2

## Strut Channel (Slotted)

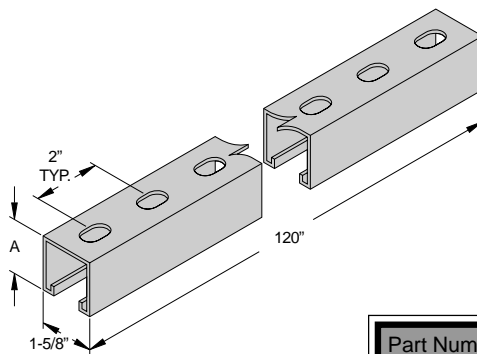
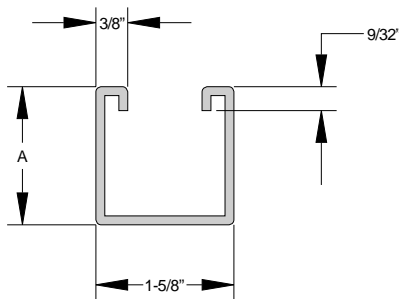
### Material

- 12 Gauge Steel

### Finish

- GN = Green
- GR = Telco Gray
- ZY = Zinc and Yellow
- AL = Aluminum
- Other Colors Available

### Notes



Part Number	A	Weight(lbs.)
ST1007-120-XX	1-5/8"	17.0
ST1005-120-XX	13/16"	8.0

Hardware

## Strut Channel (Solid)

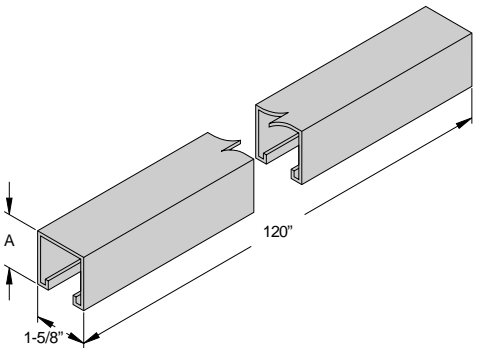
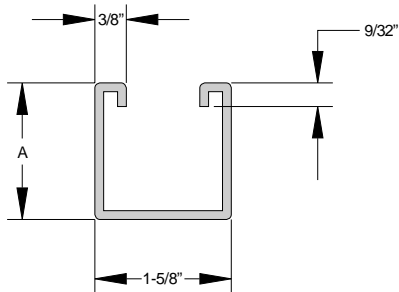
### Material

- 12 Gauge Steel

### Finish

- GN = Green
- GR = Telco Gray
- ZY = Zinc and Yellow
- AL = Aluminum
- Other Colors Available

### Notes



Part Number	A	Weight(lbs.)
ST1008-120-XX	1-5/8"	17.0
ST1006-120-AL	13/16"	8.0

Hardware

## Spring Nut

**Material**

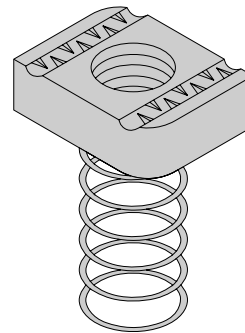
- Stainless Steel

**Finish**

- Stainless

**Notes**

- Other Sizes Available Upon Request



Part Number	Thread	Strut Size	Weight(lbs.)
SN14	1/4"-20	1-5/8"	6.9 per 100
SN38	3/8"-16	1-5/8"	8.8 per 100
SN12	1/2"-13	1-5/8"	9.1 per 100
SN58	5/8"-11	1-5/8"	11.6 per 100
SN14A	1/4"-20	13/16"	6.4 per 100
SN38A	3/8"-16	13/16"	7.9 per 100
SN12A	1/2"-13	13/16"	8.0 per 100
SN58A	5/8"-16	13/16"	9.8 per 100

Hardware

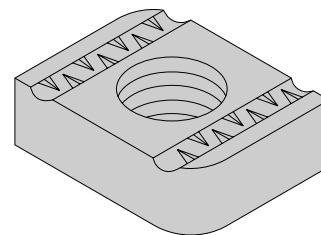
## Strut Nut

**Material**

- Stainless Steel

**Finish**

- Stainless

**Notes**

Part Number	Thread	Weight(lbs.) Per 100
SN14B	1/4" - 20	6.5
SN38B	3/8" - 16	9.3
SN12B	1/2" - 13	8.0
SN58B	5/8" - 11	10.3

## Ground Bar Kit Insulated 4" x 10"

**Material**

- 1/4" Copper

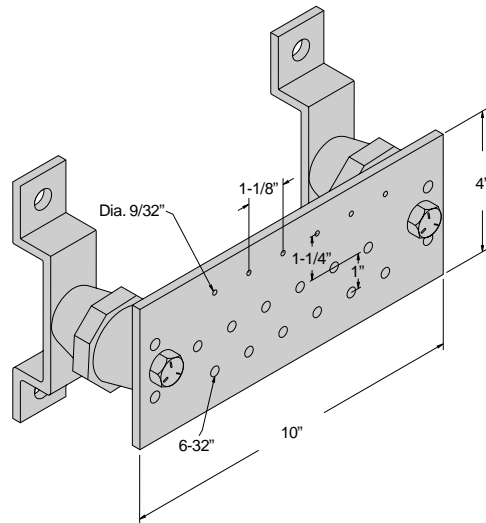
**Finish**

- Copper

**Notes**

**Contains**

- (1) Ground Bar
- (2) Insulators, Brackets
- (4) 5/8" Lock Washers, Hex Head Screws



Part Number	Weight(lbs.)
GBKI410	5.0

Hardware

## Ground Bar Kit Insulated 4" x 20"

**Material**

- 1/4" Copper

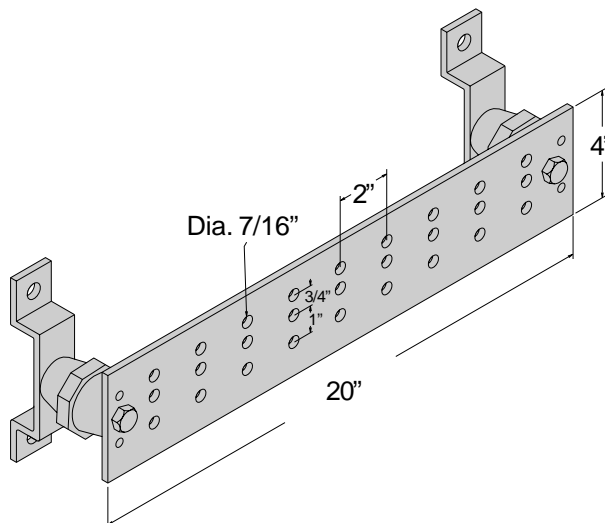
**Finish**

- Copper

**Notes**

**Contains**

- (1) Ground Bar
- (2) Insulators, Brackets
- (4) 5/8" Lock Washers, Hex Head Screws



Part Number	Weight(lbs.)
GBKI420	8.0

Hardware

## Ground Bar Kit Insulated 1" x 12"

**Material**

- 1/4" Copper
- Insulator Meets UL 94 V-O

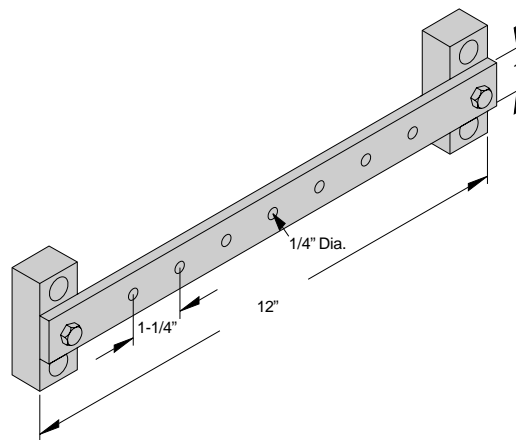
**Finish**

- Copper

**Notes**

**Contains**

- (1) Ground Bar
- (2) Insulating Blocks, 1/4" Hex Head Screws, 1/4" Hex Nuts



Part number	Weight(lbs.)
GB14112	1.0

Hardware

## Insulator Red Polyester

**Material**

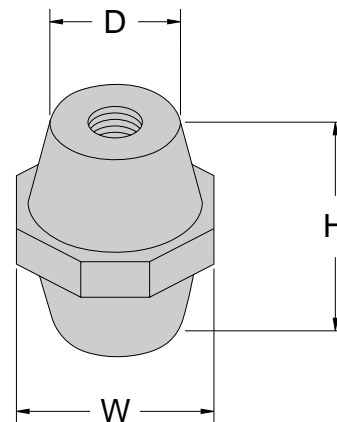
- Polyester Fiberglass
- Insulator Meets UL 94 V-O

**Finish**

- Red

**Notes**

- Insulator Meets UL 94 V-O



Part Number	Size	H	W	D	Weight(lbs.)
INS14	1/4"-20	1-1/2"	2"	1-1/4"	0.3
INS38	3/8"-16	1-1/2"	2"	1-1/4"	0.3
INS12	1/2"-13	1-3/4"	2"	1-1/4"	0.4
INS58	5/8"-11	2-3/4"	2-5/8"	1-1/2"	0.6